



## New Insignia™ Release | January 2017

*Click below for more information on the new features included in our latest Insignia upgrade!*

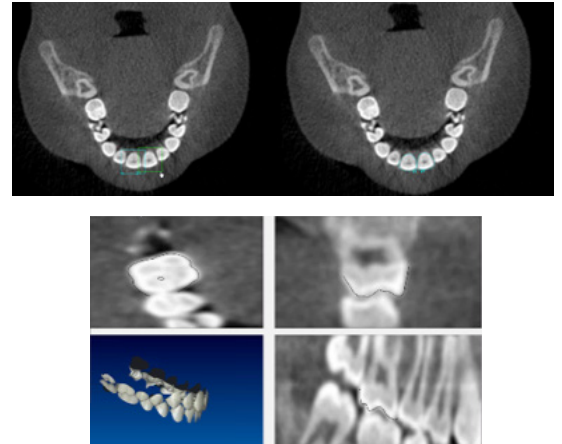
### **TABLE OF CONTENTS**

- **TRUROOT™ DATA INTEGRATION & IMPROVED LIBRARY ROOTS**
- **NEW APPROVER FEATURES**
- **SUBMITTING CBCT DATA VIA DICOM FILES - INSTRUCTIONS**
- **SUBMITTING INTRAORAL SCANNER DATA - INSTRUCTIONS**
- **ACCEPTED INTRAORAL SCANNERS**

## ANNOUNCING TRUROOT™ DATA INTEGRATION & IMPROVED LIBRARY ROOTS

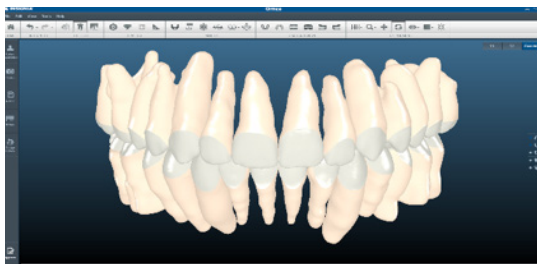
### WHAT IS TRUROOT TECHNOLOGY?

Ormco has developed a proprietary pattern recognition algorithm (“TruRoot”) which precisely combines CBCT and intraoral scanner/impression data for uncompromising accuracy in the representation of root positions. Our TruRoot technology has the ability to map each root position even from low dose radiation scans, enabling you to reduce patients’ exposure to radiation without compromising your ability to diagnose the best treatment plan. Submit your patients’ CBCT data when beginning a new case and see the true root position incorporated into your case setup in Approver.

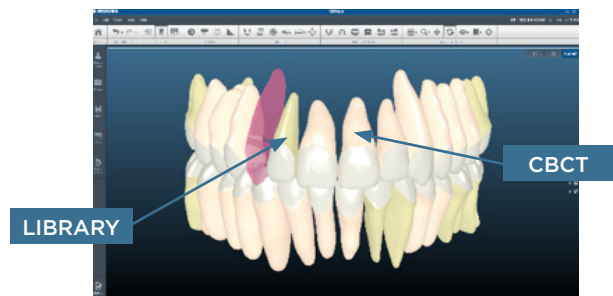


### WHAT WILL THE CBCT ROOTS LOOK LIKE IN APPROVER?

If the data submitted from your CBCT scanner is clear and contains no artifacts, you will see images similar to this:

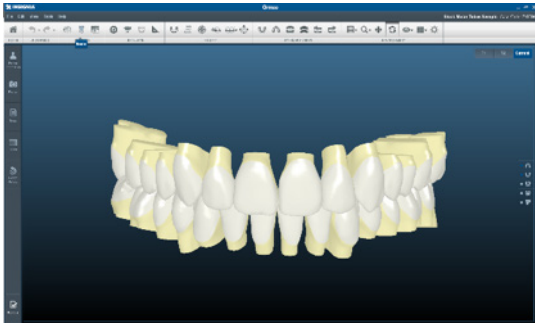


If some of the data submitted from your CBCT scanner is unclear and/or contains artifacts, the sophisticated TruRoot software will use as much data as possible from your CBCT scan and replace the insufficient data with Insignia's library root images as shown here:

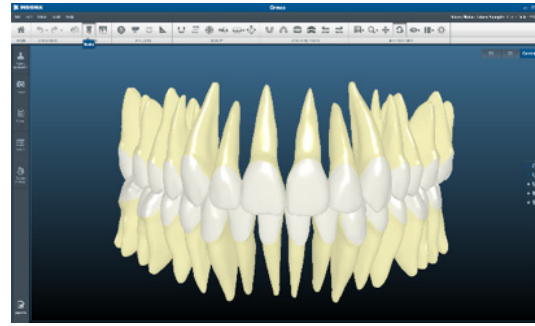


## WHAT IF I DON'T HAVE CBCT DATA FOR SOME OF MY PATIENTS?

We've also updated Insignia's existing root library to allow you to see the full length and entire root position, so you can take advantage of improved treatment planning tools with or without CBCT data.



**Previous view:** cropped library roots



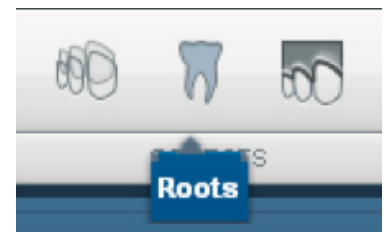
**New view:** long library roots

## HOW ARE LIBRARY ROOTS ATTACHED TO THE CROWNS IN MY CASE?

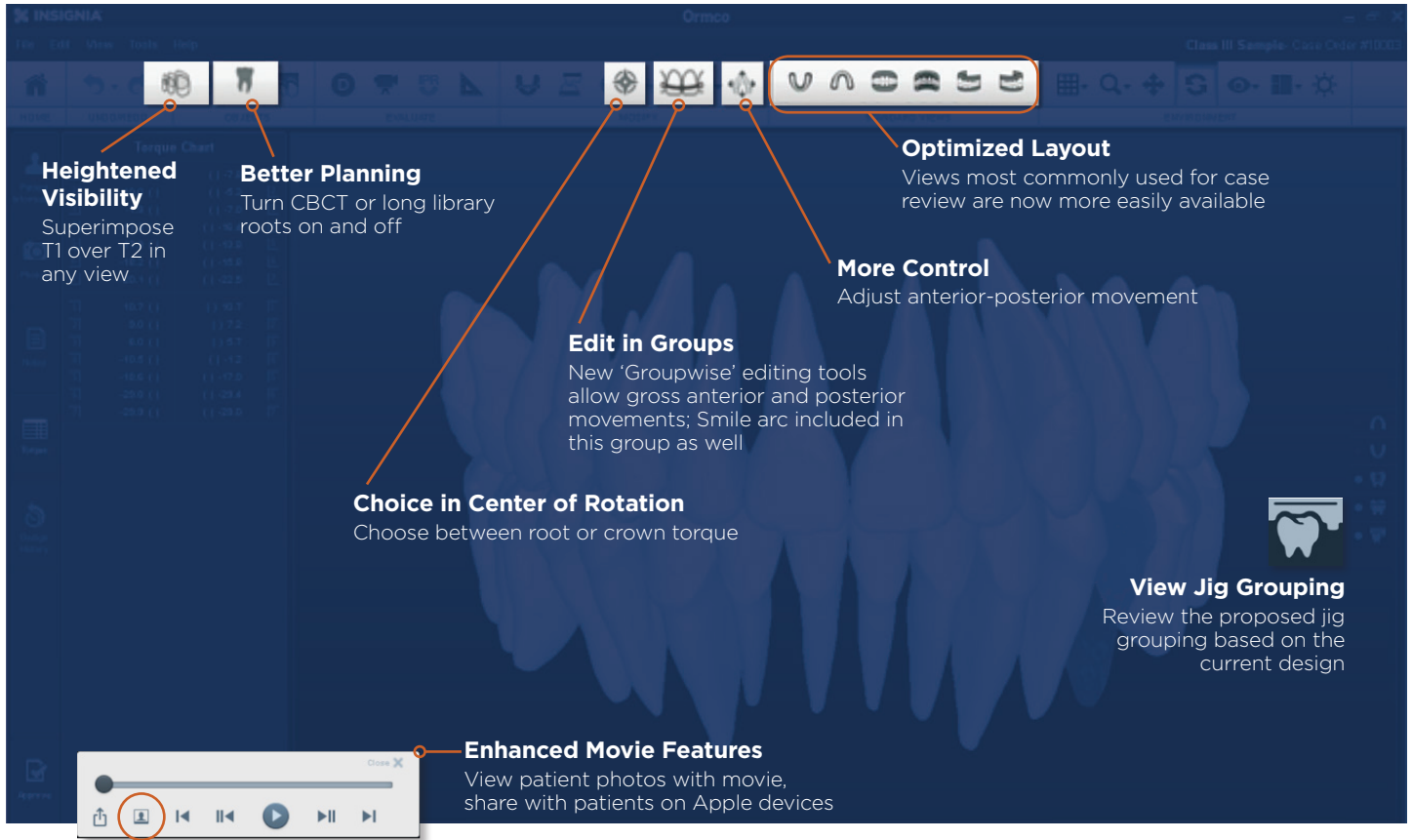
Insignia's library roots are automatically sized and attached to the crown based on individual crown size. The position of the root is an estimate based on the submitted Pan/Ceph and is manually adjusted by the technician.

## CAN I REMOVE THE ROOTS FROM VIEW IF I JUST WANT TO LOOK AT THE CROWNS?

Yes, Insignia's original cropped view is still available for both library and CBCT roots. The long root view can be turned on and off using the following toolbar button:



## KEY APPROVER™ ENHANCEMENTS FOR JANUARY 2017 RELEASE



**Heightened Visibility**  
Superimpose T1 over T2 in any view.

**Better Planning**  
Turn CBCT or long library roots on and off.

**Optimized Layout**  
Views most commonly used for case review are now more easily available.

**More Control**  
Adjust anterior-posterior movement.

**Edit in Groups**  
New 'Groupwise' editing tools allow gross anterior and posterior movements; Smile arc included in this group as well.

**Choice in Center of Rotation**  
Choose between root or crown torque.

**View Jig Grouping**  
Review the proposed jig grouping based on the current design.

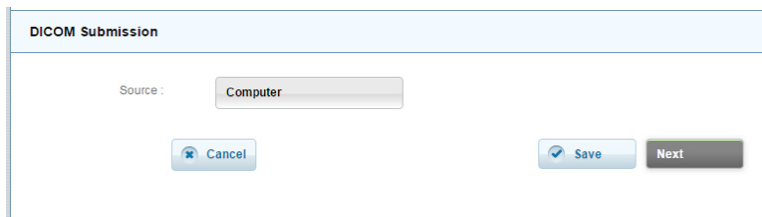
**Enhanced Movie Features**  
View patient photos with movie, share with patients on Apple devices.

## SUBMITTING CBCT DATA VIA DICOM FILES

**IMPORTANT NOTE:** The CBCT and intraoral scanner/impression data **MUST** be taken from the patient in the same timeframe or the patient’s root and crown data may not stitch together properly.

### UPLOAD INSTRUCTIONS

- Access the patient’s DICOM files from your CBCT scanner.
- Export the data using the “multi-file, uncompressed” option from your CBCT scanner and save all of the patient’s DICOM files into one folder on your hard drive.
- Compress the folder containing **all** of the patient’s DICOM files into one single .zip file. Any popular compression tool, such as WinZip ([www.winzip.com](http://www.winzip.com)) or 7-zip ([www.7-zip.org](http://www.7-zip.org)), will do.
  - **Please note: The .zip file should not exceed 200 MB in size.**
- Upload the DICOM zip file using the new **DICOM Submission** functionality on OrmcoDigital.com.
  - When you reach the **DICOM Submission** section in the **Upload** step, select **Computer** to drag and drop the appropriate .zip file for upload.



### WHAT FIELD OF VIEW IS REQUIRED FOR SUBMISSION?

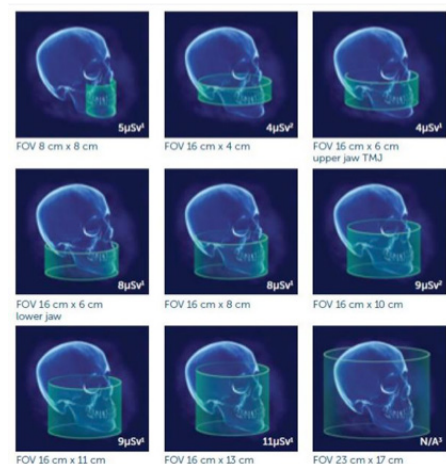
Any field of view that covers the upper and lower jaw, inclusive of the root apex, is acceptable. Please see the diagram at right for reference views.

### WHAT VOXEL RESOLUTION IS REQUIRED FOR SUBMISSION?

We may be able to accept lower resolution data, but recommend providing a scan with voxel resolution of 0.4 or smaller.

### WHAT CBCT SCANNER CAN I USE?

We accept DICOM files from all CBCT scanners.



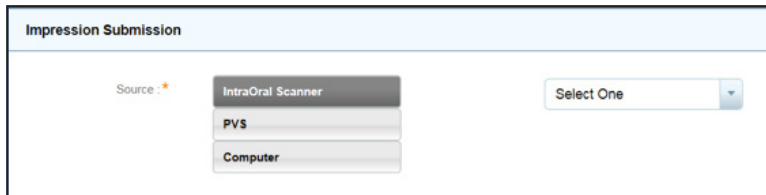
## SUBMITTING I/O SCANS WITH INSIGNIA

### INSIGNIA CURRENTLY ACCEPTS SCANS FROM THE FOLLOWING PRODUCTS:

- 3Shape Trios
- Carestream Dental CS 3600
- iTero (Element, iOC and Restorative Models)
- Lythos



Intraoral scans are a patient-friendly way of collecting accurate data for Insignia case design. Submitting scan data on OrmcoDigital.com is simple when adding a new patient. When you reach the **Impression Submission** section in the **Upload** step, click on **IntraOral Scanner** and select the correct machine.



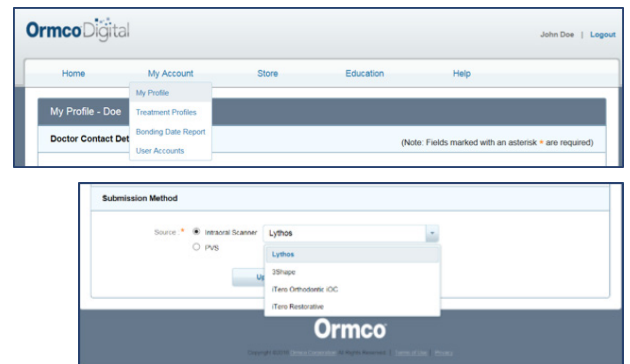
- If Lythos or 3Shape\* are chosen, available scans will load directly on the screen. Choose the patient you wish to submit data for. **Computer** can also be selected to drag and drop or upload files.
- If iTero\*\* is selected, and you are using the iTero cloud, our internal support team will grab and add the data to the case. Please make sure the patient name you enter into OrmcoDigital.com matches what is entered on the scanner. **Computer** can also be selected to drag and drop or upload files.
- For all other scanners, please select **Computer** to drag and drop or upload files.
- We are only able to accept .stl files.



### TIP! Select a Default Submission Method

Selecting a default can assist in the patient submission process.

To set a default, select **My Account** and then **My Profile**. Select your preferred scanner in the **Submission Method** section of the form. The selected default will display in the order form each time a new patient is added.



\*Ormco must be added as a lab for 3Shape customers. \*\*Ormco Custom Insignia must be added as a lab for iTero customers. For further instructions to add a lab, please contact your scanner manufacturer or refer to the Education/Resources section within OrmcoDigital.com. Ormco does not accept scans from non-approved third party scanners.

## ACCEPTED SCANNERS AS OF JANUARY 2017

INTRAORAL SCANS FOR INSIGNIA CASES CAN NOW BE SUBMITTED WITH THE FOLLOWING DEVICES:

Company	Type	Model Name
<b>Ormco</b>	Intraoral	Lythos
<b>3Shape</b>	Intraoral	Trios Color
		Trios 3 color/mono
		Trios Standard
	Desktop	R500
		R750
		R850
		R900L
		R1000
		R2000
<b>Align Technology</b>	Intraoral	iTero iOC
		iTero Restorative
		iTero Element
<b>Carestream Dental</b>	Intraoral	CS 3600

**Please note:** Insignia does not accept scans from non-approved third party scanners.