

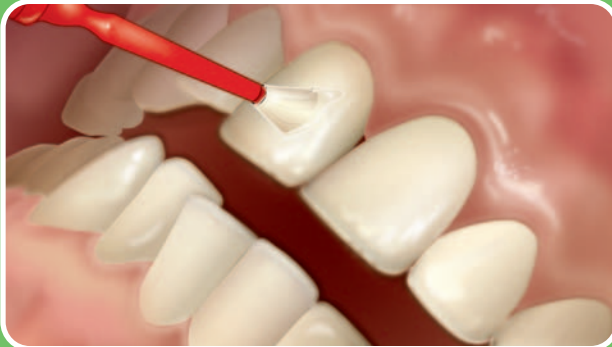


For Metal Brackets

Technique Guide

(Side 1)

Step 1



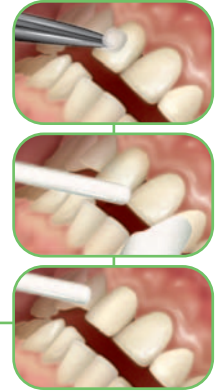
Apply **very thin** coat of Ortho Solo™ to the prepared tooth.

Tooth Preparation

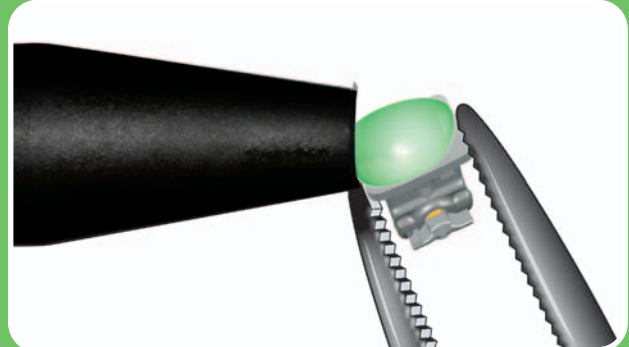
Etch approximately 30 seconds per tooth (one arch at a time).

Rinse thoroughly for a minimum of 5 seconds per tooth with a forceful air/water spray and suction using a high-speed evacuator.

Dry etched enamel with clean, dry air. Inspect to ensure a uniform, dull, frosty appearance.



Step 2



Extrude small amount of grēngloo adhesive paste onto the bracket pad. Wear gloves when handling this product.

Technique Guide

(Side 2)

Step 3

- (A) Place bracket
- (B) Position bracket
- (C) Press gently
- (D) Remove excess adhesive

Note: Finalize position and begin light curing within 2 minutes. Green color will disappear when adhesive approaches body temperature.

Step 4 – Light Cure

Conventional LED light:
10 seconds for clear brackets,
20 seconds for metal brackets and
30 seconds for molar tubes.

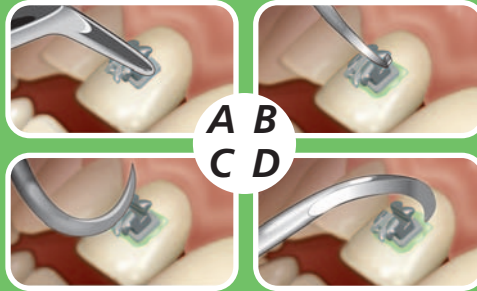
CoolBeam™ LED or Halogen light:
5 seconds for all bracket types,
10 seconds for molar tubes.

Cleanup Feature

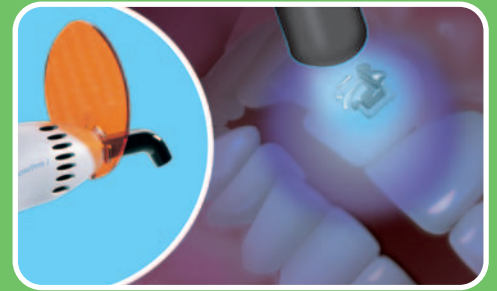
(A) To see remaining grEngloo adhesive after debonding, cool the adhesive with short blasts of air or water to revert it back to its original green color.

(B) Remove remaining grEngloo adhesive with high- or low-speed carbide burs followed by sandpaper discs and a polishing cup or paste.

Step 3



Step 4



Cleanup Feature

